



Division of Criminal
Justice Services

Andrew M. Cuomo
Governor

Michael C. Green
Executive Deputy Commissioner

December 2020

Probation Population in New York State 2019

The state Division of Criminal Justice Services regulates and funds local probation departments that operate in New York City and each of the 57 counties outside of the five boroughs.

Probation is a court-ordered sentence that allows individuals who have been convicted of crimes to remain in the community while being supervised and connected to services and support to help them lead a crime-free life. This sanction is an alternative to incarceration, although some individuals serve what is known as split sentence: time in jail followed by probation supervision upon release from incarceration.

This report provides an overview of the state's adult (18 and older) probation population, which includes individuals whose probation supervision was transferred to New York from another state under the Interstate Compact (as of Dec. 31, 2019). Data for this report are derived from the Integrated Probation Registrant System, which is maintained by DCJS.

Demographic information (sex, age when sentenced and race/ethnicity) of individuals on probation; conviction offense type; and discharge type are presented for New York State and its two regions: New York City and the Rest of State.

- New York City: Bronx, Kings, Manhattan, Queens, Richmond
- Rest of State: Albany, Allegany, Broome, Cattaraugus, Cayuga, Chautauqua, Chemung, Chenango, Clinton, Columbia, Cortland, Delaware, Dutchess, Erie, Essex, Franklin, Fulton, Genesee, Greene, Hamilton, Herkimer, Jefferson, Lewis, Livingston, Madison, Monroe, Montgomery, Nassau, Niagara, Oneida, Onondaga, Ontario, Orange, Orleans, Oswego, Otsego, Rensselaer, Rockland, Putnam, Saratoga, Schoharie, Schenectady, Schuyler, Seneca, St. Lawrence, Steuben, Suffolk, Sullivan, Tioga, Tompkins, Ulster, Warren, Washington, Wayne, Westchester, Wyoming and Yates

The report also includes county-specific data in eight appendices:

- Appendix A: Probationers Sentenced to Probation, 2015 – 2019
- Appendix B: Probationers Under Supervision, 2015 – 2019
- Appendix C: Probationers Discharged from Supervision, 2015 – 2019
- Appendix D: Probationers Under Supervision on December 31, 2019 by Conviction Category
- Appendix E: Probationers Under Supervision on December 31, 2019 by Crime Category
- Appendix F: Probationers Under Supervision on December 31, 2019 by Sex
- Appendix G: Probationers Under Supervision on December 31, 2019 by Race/Ethnicity
- Appendix H: Probationers Discharged from Supervision in 2019 by Discharge Type

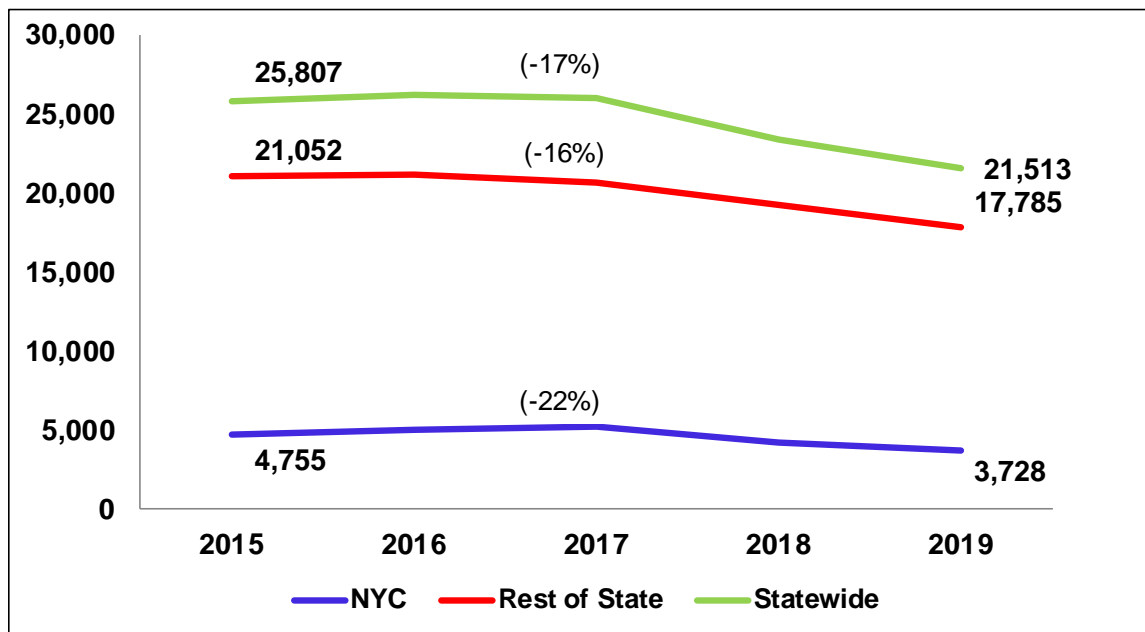
Adults Sentenced to Probation: Five-Year Trends

The number of adults sentenced to probation decreased 17 percent during the five-year period from 2015 to 2019.

New York City saw a steeper decline in the number of individuals under sentence than the Rest of State (22% vs. 16%).

In 2019, courts across the state sentenced 21,513 individuals to probation, with the vast majority of them supervised by departments in the Rest of State: 17,785 (83%) as compared to 3,728 (17%) in New York City.

Individuals Sentenced to Probation: 2015 – 2019



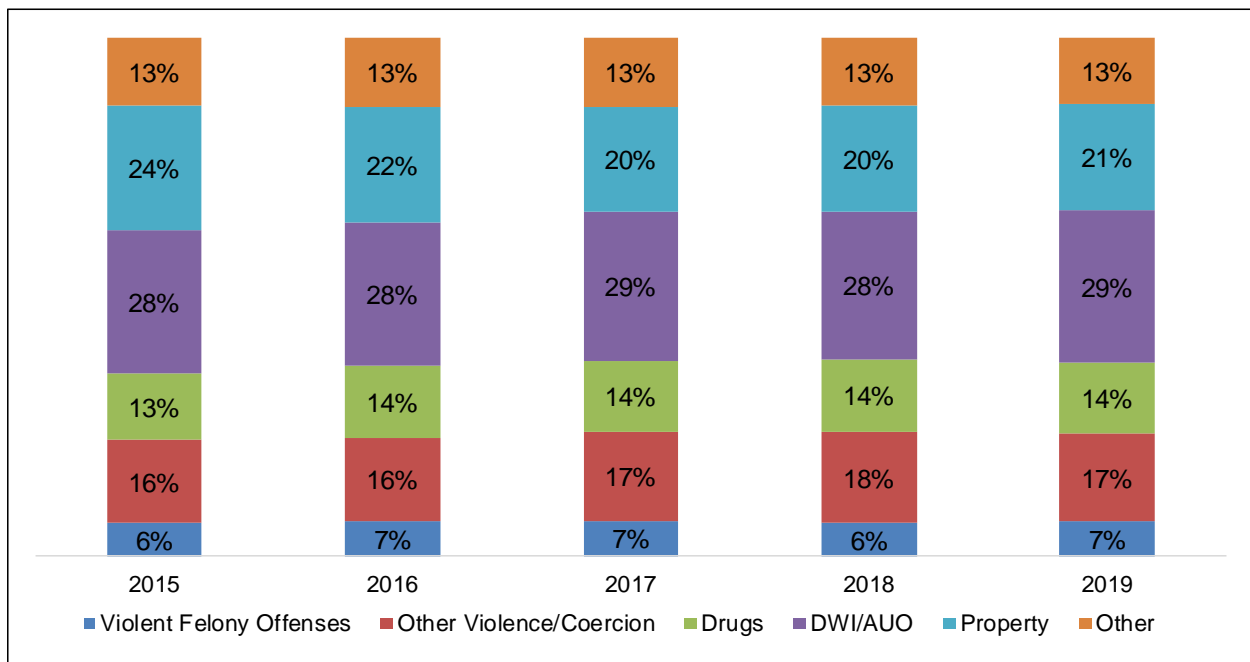
Note: This table excludes 4,842 individuals placed on interim supervision, which allows the court to adjourn sentencing for up to one year from the date of conviction to see whether individuals are successful on probation. The court may terminate interim supervision at any time if the individual is not successful and may sentence the individual to jail or prison.

Statewide Trends in Conviction Offenses

The proportion of individuals sentenced to probation by conviction offense remained consistent from 2015 through 2019, with DWI/AUO being the most common conviction offense type for each of the five years, followed by property offenses; other violence/coercion offenses; drug offenses; other offenses; and violent felony offenses.

There was little or no change in the percentage of individuals sentenced for these offenses, except for property offenses, which decreased from 24 percent in 2015 to 21 percent in 2019.

Conviction Offense Types Statewide: 2015 – 2019



Violent Felony Offenses (VFOs) are defined in Penal Law Article 70.02.

Other Violence/Coercion Offenses include, but are not limited to, felony and misdemeanor crimes against individuals or property, such as assault, harassment and arson.

Drug Offenses are defined in Penal Law Article 220 and Penal Law Article 221.

Driving While Intoxicated/Aggravated Unlicensed Operation Offenses are defined in Vehicle and Traffic Law and involve driving under the influence of alcohol or drugs and driving without a license.

Property Offenses include crimes such as burglary and trespass, criminal mischief, larceny and criminal possession of stolen property, among others.

Other Penal, Non-Penal or Unknown Offenses include crimes such as health care fraud, agricultural and markets offenses, and environmental conservation offenses. This category also includes individuals with convictions in other states whose probation supervision has been transferred to New York State under the Interstate Compact. Conviction charges in those cases may not be reported.

Trends in Conviction Offense Types by Region

Total sentences to probation declined statewide, in New York City and the Rest of State during the past five years. The decrease was driven by declines in different conviction offenses in each region:

- In New York City, fewer individuals were sentenced to probation after convictions to drug offenses (-33%), property offenses (-27%), and violent felony offenses (-27%)
- In the Rest of State, the most significant decreases were seen in individuals sentenced after convictions to property crimes (-29%) and other offenses (-19%).

Percent Change in Conviction Offenses: 2015 – 2019

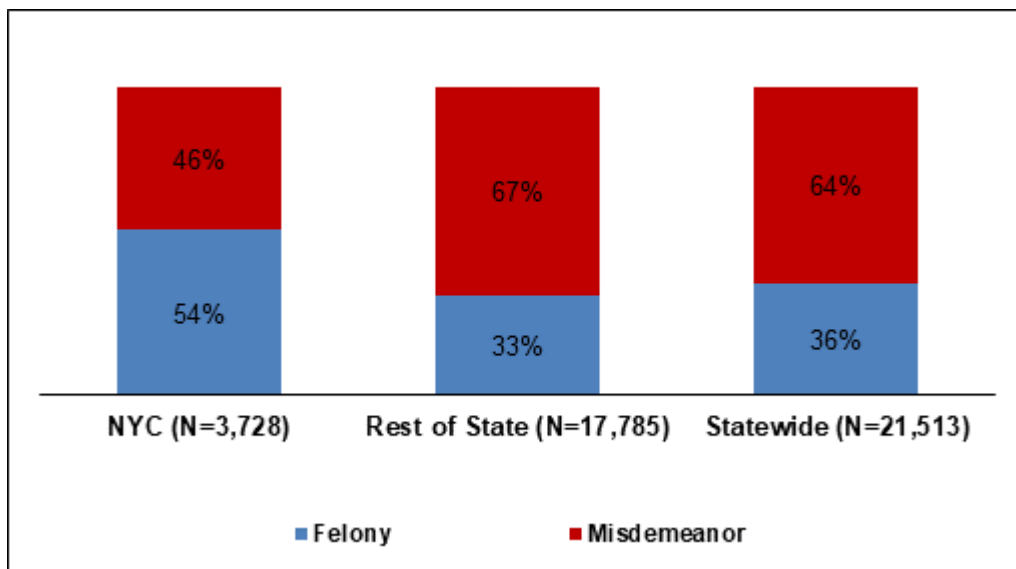
Conviction Offense	NYC		
	2015	2019	% Change
Violent Felony Offenses	658	482	-27%
Other Violence/Coercion	843	779	-8%
Drugs	859	573	-33%
DWI/AUO	786	651	-17%
Property	950	692	-27%
Other	659	551	-16%
Total	4,755	3,728	-22%
Conviction Offense	Rest of State		
	2015	2019	% Change
Violent Felony Offenses	984	949	-4%
Other Violence/Coercion	3,292	2,870	-13%
Drugs	2,439	2,392	-2%
DWI/AUO	6,355	5,643	-11%
Property	5,278	3,736	-29%
Other	2,704	2,195	-19%
Total	21,052	17,785	-16%
Conviction Offense	Statewide		
	2015	2019	% Change
Violent Felony Offenses	1,642	1,431	-13%
Other Violence/Coercion	4,135	3,649	-12%
Drugs	3,298	2,965	-10%
DWI/AUO	7,141	6,294	-12%
Property	6,228	4,428	-29%
Other	3,363	2,746	-18%
Total	25,807	21,513	-17%

Conviction Crime Category

Nearly two-thirds (64%) of individuals sentenced to probation in New York State were convicted of misdemeanor crimes. There were regional differences in conviction crime category:

- A probation sentence for a misdemeanor conviction was more common in the Rest of State (67%) than in New York City (46%).
- In New York City, more than half (54%) of individuals sentenced to probation were convicted of felonies¹ compared to 33 percent in the Rest of State.

Conviction Crime Category by Region: 2019



¹ Convictions include Youthful Offender adjudications.

Conviction Offense Types

The conviction offense for which individuals were supervised varied greatly between New York City and the Rest of State:

- In New York City, 34 percent of individuals were convicted of a violent felony offense or other crime of violence/coercion, compared to 21 percent in the Rest of State.
- The most common conviction charges in the Rest of State were driving while intoxicated/aggravated unlicensed operation (32%) and property offenses (21%).

Conviction Offenses by Region: 2019

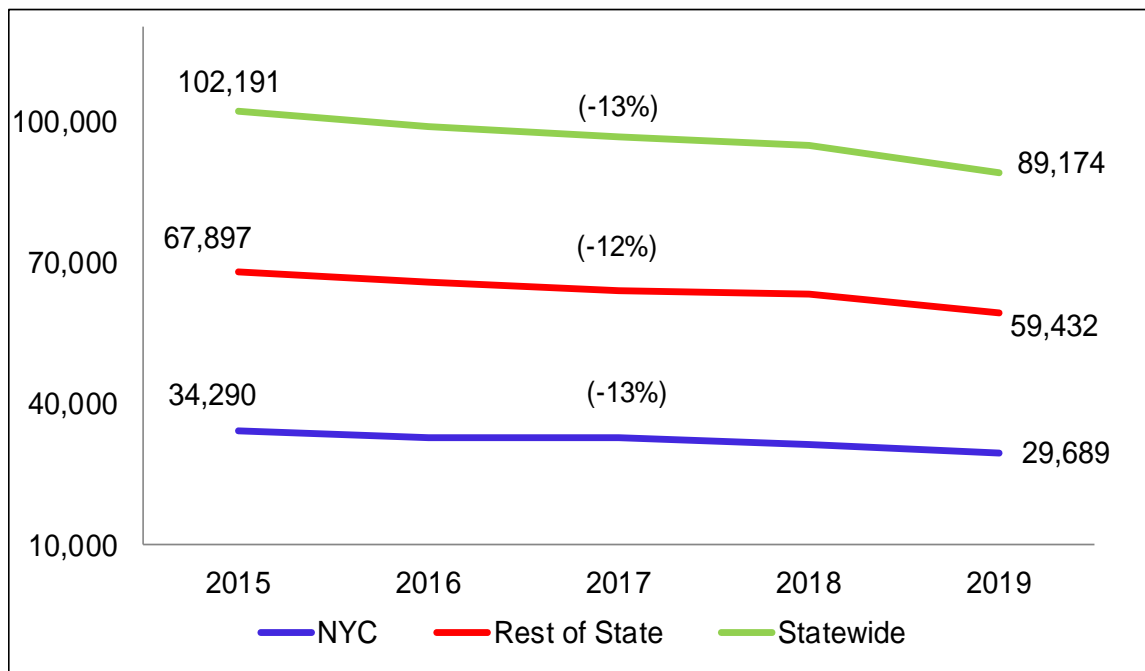
Conviction Offense	NYC		Rest of State		Statewide	
	N	%	N	%	N	%
Violent Felony Offenses	482	13%	949	5%	1,431	7%
Other Violence/Coercion	779	21%	2,870	16%	3,649	17%
Drugs	573	15%	2,392	13%	2,965	14%
DWI/AUO	651	17%	5,643	32%	6,294	29%
Property	692	19%	3,736	21%	4,428	21%
Other	551	15%	2,195	12%	2,746	13%
Total	3,728	100%	17,785	100%	21,513	100%

Individuals Under Probation Supervision: Five-Year Trends

Between 2015 and 2019, the number of individuals being supervised statewide declined by 13 percent (102,191 vs. 89,174).²

- The number of individuals supervised in New York City also declined by 13 percent while decreasing 12 percent in the Rest of State.

Individuals Under Probation Supervision: 2015 – 2019



Note: All individuals under supervision counts include a small number of interim supervision cases and individuals sentenced in other states but supervised in New York under the Interstate Compact.

² The Statewide numbers include cases in which the county of supervision information was not reported.

Individuals Under Supervision (Dec. 31, 2019)

There were 89,174 individuals under probation supervision in New York State on Dec. 31, 2019:

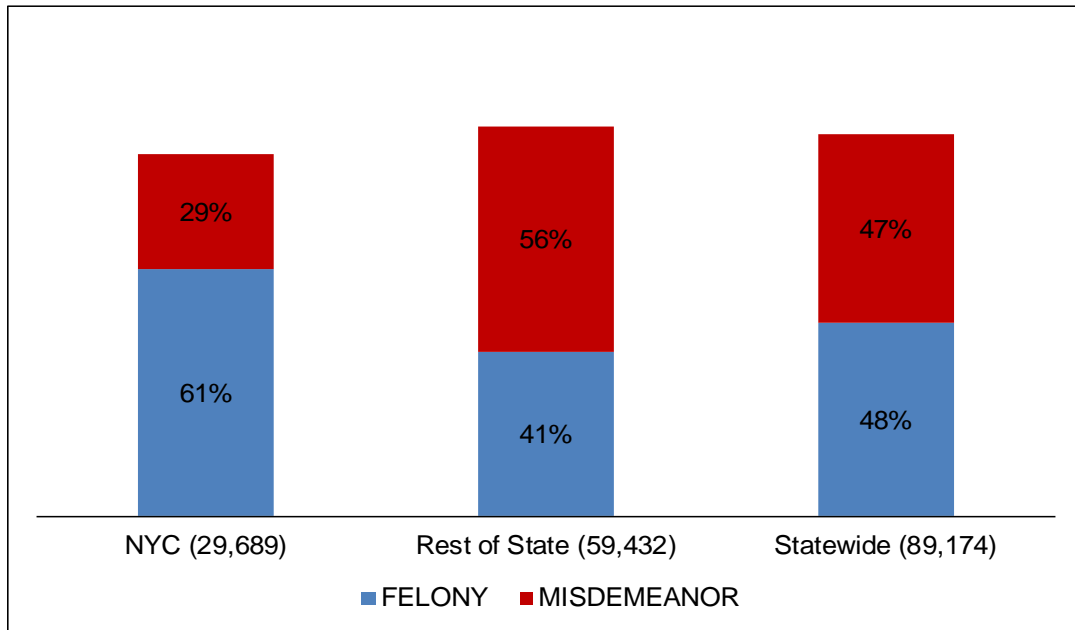
- 29,689 (33%) in New York City and
- 59,432 (67%) in the Rest of State.

Conviction Crime Category

Statewide, 48 percent of individuals were on probation for a felony conviction. The conviction crime category varied by region:

- In New York City, 61 percent were on probation following a felony conviction, as compared to 41 percent in the Rest of the State.
- In the Rest of State, more individuals were on probation following a misdemeanor conviction (56% vs. 29% in New York City).

Conviction Crime Category by Region: 2019



Conviction Offense Types

Statewide, the most common conviction offenses for individuals under supervision were DWI/AUO (26%) and property (18%) offenses.

Those two offenses also were the most common for individuals under supervision in the Rest of State (DWI/AUO: 33% and property: 19%).

In New York City, a drug offense was the most common conviction for individuals under supervision (25%), followed by violent felony offenses (15%) and property offenses (15%).

Conviction Offense by Region: 2019

Conviction Offense	NYC		Rest of State		Statewide	
	N	%	N	%	N	%
Violent Felony Offenses	4,508	15%	3,775	6%	8,283	9%
Other Violence/Coercion	4,102	14%	9,310	16%	13,412	15%
Drugs	7,364	25%	7,109	12%	14,473	16%
DWI/AUO	3,179	11%	19,892	33%	23,071	26%
Property	4,491	15%	11,283	19%	15,774	18%
Other	2,883	10%	6,582	11%	9,466	11%
Sentenced from Out of State	3,162	11%	1,481	2%	4,695	5%
Total	29,689	100%	59,432	100%	89,174	100%

Note: When individuals with out-of-state convictions transfer into New York State, the conviction charge and/or crime class category may not be recorded in the Integrated Probation Registrant System.

Demographics

More than three-quarters of the individuals under probation supervision in New York State were male.

- There were more females on probation in the Rest of State (26%) than in New York City (15%).

Statewide, 44 percent of individuals supervised were White, as compared to 29 percent Black and 21 percent Hispanic.

- In New York City, the majority of individuals on probation were either Black (44%) or Hispanic (33%) while in the Rest of the State, individuals under supervision were predominantly White (59%).

Individuals under probation supervision in New York City were younger when sentenced: 30 percent were under the age of 25, compared to 20 percent in the Rest of State.

- The median age at sentencing was 29 in New York City and 32 in the Rest of State.

Demographics of Individuals under Supervision: 2019

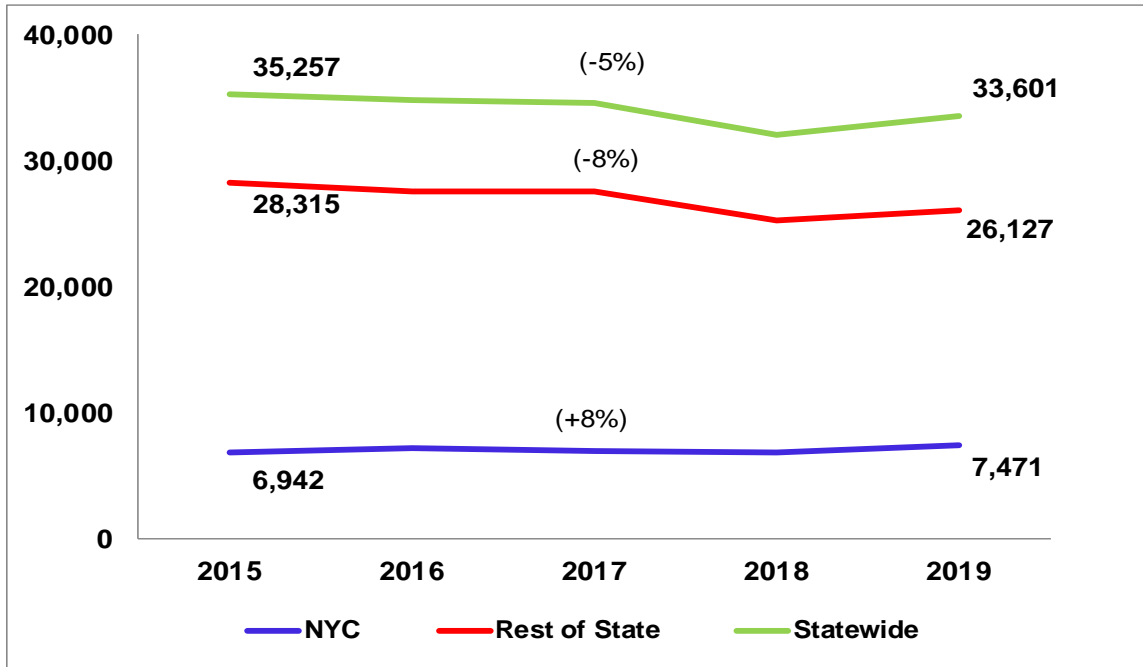
Demographics	NYC		Rest of State		Statewide	
	N	%	N	%	N	%
Sex						
Female	4,509	15%	15,298	26%	19,819	22%
Male	24,771	83%	44,045	74%	68,857	77%
Unknown	409	1%	89	<1%	498	1%
Race/Ethnicity						
White	4,343	15%	35,172	59%	39,554	44%
Black	12,981	44%	12,952	22%	25,943	29%
Hispanic	9,813	33%	8,738	15%	18,554	21%
Asian	865	3%	523	1%	1,388	2%
Am.Indian	22	<1%	397	1%	419	<1%
Other	820	3%	457	1%	1,278	1%
Not Reported	845	3%	1,193	2%	2,038	2%
Age at Sentence						
16-17 years	1,383	5%	1,315	2%	2,698	3%
18-20 years	3,311	11%	4,139	7%	7,452	8%
21-24 years	4,127	14%	6,471	11%	10,603	12%
25-29 years	4,901	17%	9,704	16%	14,611	16%
30-39 years	6,828	23%	15,372	26%	22,207	25%
40+ years	6,517	22%	16,572	28%	23,095	26%
Unknown	2,622	9%	5,859	10%	8,508	10%
Total	29,689	100%	59,432	100%	89,174	100%
Median age at sentence	29		32		31	

Individuals Discharged from Probation: Five-Year Trends

The number of individuals discharged from probation supervision decreased by 5 percent statewide when comparing 2015 to 2019 (35,257 vs. 33,601).

Between 2015 and 2019, the number of individuals discharged from probation in New York City increased by 8 percent while in the Rest of State, it declined by the same percentage.

Individuals Discharged from Probation: 2015 - 2019



Discharge Type

In 2019, courts discharged 33,601 individuals from probation supervision, the vast majority of them in the Rest of State (78% or 26,127).

Probation sentences for most felony convictions are either three, four or five years. State law requires longer probation terms for certain felonies, including sexual assault.

Probation sentences for misdemeanor convictions are either one, two or three years, depending on the type of misdemeanor (Class A, B or unclassified). State law requires a six-year sentence for misdemeanor sexual assault.

Statewide, 38 percent of individuals under probation supervision were discharged after serving the full sentence imposed by the court, 20 percent of individuals were discharged from supervision early and 25 percent of individuals had their probation revoked:

- 19 percent for technical violations, such as violating one or more orders of their conditions of probation (e.g., failing drug tests, missing home and office visits); and
- 6 percent for new convictions.

Ten percent were “referred for further court action.” These usually are interim cases. Interim cases are “referred for further court action” to either be formally sentenced to probation or to have their supervision terminated.

There were regional differences in the type of discharges granted by the court:

- In New York City, 59 percent of individuals on probation remained under supervision until reaching their maximum expiration date, compared to 32 percent of individuals in the Rest of State.
- In the Rest of State, a higher percentage of individuals were granted early discharge by the court than in New York City (21% vs. 14%).
- There were more technical revocations in the Rest of State as compared to New York City (22% vs. 7%).

Discharge Type by Region: 2019

Discharge Type	NYC		Rest of State		Statewide	
	N	%	N	%	N	%
Maximum Expiration	4,414	59%	8,480	32%	12,896	38%
Early Discharge	1,021	14%	5,594	21%	6,615	20%
Revoked Technical Violation	551	7%	5,749	22%	6,300	19%
Revoked New Conviction	496	7%	1,455	6%	1,951	6%
Early Discharge Due to New Conviction	4	<1%	155	1%	159	<1%
Referred for Further Court Action	126	2%	3,227	12%	3,353	10%
Death	58	1%	484	2%	542	2%
Other	801	11%	983	4%	1,785	5%
Total	7,471	100%	26,127	100%	33,601	100%

Maximum Expiration: The probation case reaches the final end date ordered by the court.

Early Discharge: the court of jurisdiction discharges an individual from probation supervision before the maximum expiration date set by the court occurs.

Revoked-Technical Violation: The court terminates the sentence because an individual fails to comply with the conditions of probation.

Revoked-New Conviction: The court terminates the sentence because an individual is convicted of a new offense.

Early Discharge Due to New Conviction: The court discharges an individual from probation after a subsequent conviction to a new offense.

Referred for Further Court Action: This typically occurs when interim cases are closed – for either a positive or negative outcome – and the court must determine next steps.

Other: The court imposes certain sentences to state prison pursuant to Penal Law Section 65.15 or authorizes the transfer of custody and supervision to federal authorities pursuant to Criminal Procedure Law Section 410.80(4).

Appendix A: Probationers Sentenced to Probation, 2015 - 2019

COUNTY	2015	2016	2017	2018	2019
ALBANY	742	719	667	602	520
ALLEGANY	110	112	134	121	123
BROOME	702	610	646	535	515
CATTARAUGUS	258	225	231	204	182
CAYUGA	261	234	211	195	202
CHAUTAUQUA	358	353	287	305	289
CHEMUNG	249	264	242	199	173
CHENANGO	145	119	93	111	116
CLINTON	250	243	228	242	244
COLUMBIA	96	96	113	91	95
CORTLAND	182	177	189	174	157
DELAWARE	113	81	99	74	84
DUTCHESS	645	601	642	558	532
ERIE	1,163	1,156	1,064	1,023	984
ESSEX	95	88	78	68	74
FRANKLIN	145	142	175	183	167
FULTON	147	145	156	163	115
GENESEE	190	179	187	198	188
GREENE	124	89	101	96	96
HAMILTON	7	2	3	1	2
HERKIMER	112	116	126	93	110
JEFFERSON	386	353	324	342	263
LEWIS	59	60	69	66	45
LIVINGSTON	168	165	157	149	147
MADISON	116	135	135	146	125
MONROE	1,656	1,869	1,945	1,896	1,641
MONTGOMERY	131	138	138	151	161
NASSAU	1,384	1,583	1,611	1,515	1,699
NIAGARA	373	384	382	349	316
ONEIDA	500	554	509	436	362
ONONDAGA	1,581	1,478	1,362	1,255	1,073
ONTARIO	332	297	321	274	269
ORANGE	673	695	703	549	582
ORLEANS	66	88	63	66	57
OSWEGO	377	371	362	314	281
OTSEGO	62	76	72	59	46
PUTNAM	105	90	115	96	96
RENSSELAER	354	311	262	245	221
ROCKLAND	267	338	269	256	244
ST LAWRENCE	198	242	166	135	207
SARATOGA	308	367	354	363	335
SCHENECTADY	367	375	303	342	298
SCHOHARIE	54	73	64	62	66
SCHUYLER	58	57	49	59	46
SENECA	106	109	97	106	77
STEUBEN	277	280	279	245	223
SUFFOLK	2,009	1,930	2,001	1,649	1,381
SULLIVAN	216	192	173	207	191
TIOGA	107	104	85	90	71
TOMPKINS	206	201	173	190	161
ULSTER	334	403	391	367	372
WARREN	193	189	217	246	212
WASHINGTON	161	170	170	160	160
WAYNE	204	172	172	175	164
WESTCHESTER	1,423	1,350	1,368	1,233	1,084
WYOMING	90	88	92	92	87
YATES	57	67	61	77	54
NON-NYC TOTAL	21,052	21,105	20,686	19,198	17,785
BRONX	1,223	1,207	1,456	993	936
KINGS	1,112	1,393	1,361	1,033	900
NEW YORK	918	1,122	1,033	868	784
QUEENS	1,195	1,026	1,108	949	852
RICHMOND	307	294	303	320	256
NYC TOTAL	4,755	5,042	5,261	4,163	3,728
STATEWIDE TOTAL	25,807	26,147	25,947	23,361	21,513

Source: DCJS Integrated Probation Registrant System (IPRS) File as of 02/2/2020

Provided by: NYS DCJS OJRP 3/25/2020

Appendix B: Probationers Under Supervision, 2015 - 2019

COUNTY	2015	2016	2017	2018	2019
ALBANY	2,454	2,288	2,168	2,032	1,972
ALLEGANY	327	343	351	355	355
BROOME	1,901	1,790	1,820	1,640	1,575
CATTARAUGUS	677	644	632	592	559
CAYUGA	693	690	642	561	515
CHAUTAUQUA	1,433	1,267	1,117	1,002	857
CHEMUNG	785	812	787	736	656
CHENANGO	391	342	320	322	323
CLINTON	743	717	731	744	762
COLUMBIA	335	320	336	333	335
CORTLAND	530	551	552	553	489
DELAWARE	241	208	229	215	212
DUTCHESS	1,938	1,818	1,801	1,727	1,698
ERIE	3,280	3,213	3,170	3,069	2,974
ESSEX	337	309	256	239	222
FRANKLIN	457	420	454	473	457
FULTON	386	373	396	431	365
GENESEE	460	444	450	425	448
GREENE	397	321	299	305	302
HAMILTON	30	22	14	7	9
HERKIMER	384	367	353	314	315
JEFFERSON	911	863	809	775	719
LEWIS	184	171	183	189	184
LIVINGSTON	474	456	439	401	383
MADISON	240	299	333	348	330
MONROE	5,375	5,298	5,482	5,645	5,386
MONTGOMERY	405	398	388	428	410
NASSAU	5,238	5,215	5,027	5,142	5,363
NIAGARA	1,132	1,109	1,149	1,113	1,127
ONEIDA	1,541	1,539	1,460	1,409	1,192
ONONDAGA	3,538	3,322	3,008	3,007	2,873
ONTARIO	1,169	1,189	1,237	1,084	1,102
ORANGE	2,323	2,222	2,126	2,025	1,910
ORLEANS	187	205	197	191	170
OSWEGO	931	916	932	867	797
OTSEGO	210	190	181	172	197
PUTNAM	485	421	406	384	384
RENSSELAER	995	926	853	877	844
ROCKLAND	1,153	1,155	1,038	996	902
ST LAWRENCE	733	622	486	444	501
SARATOGA	870	974	922	990	917
SCHENECTADY	1,073	1,056	946	1,008	966
SCHOHARIE	206	199	216	205	197
SCHUYLER	152	136	124	128	116
SENECA	253	265	260	269	275
STEUBEN	855	835	805	748	704
SUFFOLK	8,824	8,396	8,535	8,177	7,629
SULLIVAN	660	613	524	480	487
TIOGA	281	274	246	271	238
TOMPKINS	566	559	528	555	481
ULSTER	1,084	1,154	1,200	1,157	1,178
WARREN	556	540	594	597	588
WASHINGTON	510	476	452	428	408
WAYNE	635	596	587	588	557
WESTCHESTER	5,486	5,407	5,066	5,674	4,039
WYOMING	285	268	284	293	291
YATES	198	206	203	199	187
NON-NYC TOTAL	67,897	65,729	64,104	63,339	59,432
BRONX	8,147	7,705	7,708	7,245	6,867
KINGS	9,251	8,991	9,075	8,502	8,001
NEW YORK	8,092	7,675	7,364	7,528	7,120
QUEENS	7,287	7,062	7,050	6,765	6,286
RICHMOND	1,513	1,464	1,473	1,461	1,415
NYC TOTAL	34,290	32,897	32,670	31,501	29,689
NOT REPORTED	4	18	20	38	53
STATEWIDE TOTAL	102,191	98,644	96,794	94,878	89,174

Source: DCJS Integrated Probation Registrant System (IPRS) File as of 02/2/2020

Provided by: NYS DCJS OJRP 3/25/2020

Appendix C: Probationers Discharged from Supervision, 2015 - 2019

COUNTY	2015	2016	2017	2018	2019
ALBANY	935	956	918	933	793
ALLEGANY	143	128	147	143	153
BROOME	761	773	759	803	745
CATTARAUGUS	277	305	295	296	305
CAYUGA	252	261	302	328	292
CHAUTAUQUA	831	997	779	787	824
CHEMUNG	269	273	309	299	292
CHENANGO	135	170	128	144	153
CLINTON	281	320	259	294	280
COLUMBIA	150	134	105	115	84
CORTLAND	171	173	205	191	218
DELAWARE	87	101	74	94	94
DUTCHESS	1,002	954	839	810	819
ERIE	1,549	1,337	1,352	1,460	1,347
ESSEX	135	124	130	80	106
FRANKLIN	228	212	154	183	188
FULTON	106	159	148	130	181
GENESEE	212	220	237	236	204
GREENE	208	188	149	140	128
HAMILTON	8	9	11	6	2
HERKIMER	108	117	157	148	126
JEFFERSON	482	458	456	444	418
LEWIS	84	86	80	66	75
LIVINGSTON	177	176	173	179	158
MADISON	195	121	157	162	165
MONROE	2,125	2,124	2,054	1,936	2,152
MONTGOMERY	143	150	159	119	158
NASSAU	2,062	1,769	1,917	1,567	1,635
NIAGARA	541	513	563	579	580
ONEIDA	614	578	588	505	614
ONONDAGA	1,342	1,599	1,753	1,383	1,294
ONTARIO	390	383	404	440	371
ORANGE	901	945	991	911	968
ORLEANS	90	100	100	91	76
OSWEGO	432	425	425	404	381
OTSEGO	69	104	79	72	35
PUTNAM	178	210	180	140	159
RENSSELAER	509	407	393	320	330
ROCKLAND	346	405	429	365	403
ST LAWRENCE	301	337	316	205	185
SARATOGA	471	322	393	354	430
SCHENECTADY	447	440	479	383	421
SCHOHARIE	82	85	74	73	87
SCHUYLER	72	67	64	57	57
SENECA	109	107	125	116	113
STEUBEN	328	369	387	397	368
SUFFOLK	3,919	3,576	3,328	3,427	3,368
SULLIVAN	220	267	310	277	238
TIOGA	175	167	176	116	139
TOMPKINS	265	276	252	238	287
ULSTER	523	495	545	582	601
WARREN	246	218	189	248	243
WASHINGTON	218	214	207	182	183
WAYNE	311	235	245	210	207
WESTCHESTER	1,832	1,704	1,925	817	1,655
WYOMING	172	159	138	153	150
YATES	96	87	67	92	89
NON-NYC TOTAL	28,315	27,589	27,578	25,230	26,127
BRONX	1,802	1,902	1,798	1,803	1,941
KINGS	1,614	1,804	1,816	1,912	1,909
NEW YORK	1,494	1,571	1,427	1,238	1,433
QUEENS	1,646	1,565	1,561	1,509	1,713
RICHMOND	386	408	412	414	475
NYC TOTAL	6,942	7,250	7,014	6,876	7,471
NOT REPORTED	0	3	3	3	3
STATEWIDE TOTAL	35,257	34,842	34,595	32,109	33,601

Source: DCJS Integrated Probation Registrant System (IPRS) File as of 02/2/2020

Provided by: NYS DCJS OJRP 3/25/2020

Appendix D: Probationers Under Supervision on December 31, 2019 by Conviction Category

COUNTY	FELONY	MISDEMEANOR	OTHER/ UNKNOWN	TOTAL
ALBANY	844	1,080	48	1,972
ALLEGANY	139	201	15	355
BROOME	669	871	35	1,575
CATTARAUGUS	254	291	14	559
CAYUGA	174	338	3	515
CHAUTAUQUA	266	551	40	857
CHEMUNG	344	287	25	656
CHENANGO	139	178	6	323
CLINTON	366	385	11	762
COLUMBIA	190	134	11	335
CORTLAND	150	329	10	489
DELAWARE	108	102	2	212
DUTCHESS	588	1,070	40	1,698
ERIE	1,686	1,193	95	2,974
ESSEX	82	138	2	222
FRANKLIN	176	276	5	457
FULTON	141	217	7	365
GENESEE	199	245	4	448
GREENE	129	169	4	302
HAMILTON	5	4	0	9
HERKIMER	143	166	6	315
JEFFERSON	330	368	21	719
LEWIS	91	91	2	184
LIVINGSTON	182	193	8	383
MADISON	142	186	2	330
MONROE	2,251	3,050	85	5,386
MONTGOMERY	165	238	7	410
NASSAU	1,885	3,377	101	5,363
NIAGARA	440	670	17	1,127
ONEIDA	518	646	28	1,192
ONONDAGA	1,047	1,774	52	2,873
ONTARIO	525	553	24	1,102
ORANGE	984	843	83	1,910
ORLEANS	80	86	4	170
OSWEGO	292	490	15	797
OTSEGO	104	92	1	197
PUTNAM	132	228	24	384
RENSSELAER	425	395	24	844
ROCKLAND	538	340	24	902
ST LAWRENCE	251	231	19	501
SARATOGA	402	494	21	917
SCHENECTADY	414	535	17	966
SCHOHARIE	91	102	4	197
SCHUYLER	59	54	3	116
SENECA	147	126	2	275
STEUBEN	468	235	1	704
SUFFOLK	2,566	4,838	225	7,629
SULLIVAN	240	227	20	487
TIOGA	113	101	24	238
TOMPKINS	195	276	10	481
ULSTER	383	772	23	1,178
WARREN	258	317	13	588
WASHINGTON	141	259	8	408
WAYNE	289	242	26	557
WESTCHESTER	1,472	2,391	176	4,039
WYOMING	128	155	8	291
YATES	93	92	2	187
NON-NYC TOTAL	24,633	33,292	1,507	59,432
BRONX	4,183	2,142	542	6,867
KINGS	4,907	2,186	908	8,001
NEW YORK	4,443	1,611	1,066	7,120
QUEENS	3,870	1,976	440	6,286
RICHMOND	721	569	125	1,415
NYC TOTAL	18,124	8,484	3,081	29,689
NOT REPORTED	1	0	52	53
STATEWIDE TOTAL	42,758	41,776	4,640	89,174

Source: DCJS Integrated Probation Registrant System (IPRS) File as of 02/2/2020

Provided by: NYS DCJS OJRP 3/25/2020

Appendix E: Probationers Under Supervision on December 31, 2019 by Crime Category

COUNTY	VFO	Other Violence/Coercion	Drugs	DWI/AUO	Property	Other
ALBANY	97	348	227	576	425	251
ALLEGANY	26	76	49	82	64	44
BROOME	180	298	266	239	396	160
CATTARAUGUS	18	106	92	154	115	60
CAYUGA	23	103	59	125	122	82
CHAUTAUQUA	45	181	139	169	187	95
CHEMUNG	32	79	83	190	178	70
CHENANGO	32	66	61	65	63	30
CLINTON	29	153	113	224	155	81
COLUMBIA	16	51	59	94	58	45
CORTLAND	18	96	84	129	102	50
DELAWARE	7	36	57	42	44	23
DUTCHESS	46	228	216	634	328	201
ERIE	448	466	273	851	543	299
ESSEX	5	40	41	60	50	25
FRANKLIN	19	83	90	111	90	59
FULTON	13	77	37	81	98	52
GENESEE	26	73	29	151	92	72
GREENE	16	46	40	100	72	25
HAMILTON	1	4	1	1	0	2
HERKIMER	20	62	27	96	62	42
JEFFERSON	43	137	121	106	201	90
LEWIS	8	43	42	46	27	16
LIVINGSTON	22	73	56	121	60	41
MADISON	20	81	37	69	74	49
MONROE	555	705	500	1,987	978	575
MONTGOMERY	13	65	45	94	124	62
NASSAU	303	661	576	2,594	613	511
NIAGARA	79	191	155	350	218	116
ONEIDA	87	239	144	301	258	136
ONONDAGA	168	481	468	647	704	350
ONTARIO	50	222	109	313	235	160
ORANGE	77	216	306	735	309	184
ORLEANS	8	28	31	53	35	11
OSWEGO	42	134	124	190	217	74
OTSEGO	9	28	43	48	45	23
PUTNAM	19	64	57	152	44	21
RENSSELAER	44	146	115	221	189	110
ROCKLAND	78	90	87	296	224	104
ST LAWRENCE	27	86	94	100	101	75
SARATOGA	34	178	67	350	175	92
SCHENECTADY	45	179	124	241	232	127
SCHOHARIE	10	28	15	59	58	24
SCHUYLER	7	12	12	48	23	12
SENECA	12	44	31	87	63	37
STEUBEN	49	103	119	213	107	112
SUFFOLK	345	1,114	584	3,601	1,082	673
SULLIVAN	30	76	40	142	109	70
TIOGA	15	31	50	55	44	13
TOMPKINS	29	79	61	141	112	47
ULSTER	38	168	143	385	243	176
WARREN	30	98	96	174	131	47
WASHINGTON	21	69	36	116	105	54
WAYNE	46	80	52	184	97	91
WESTCHESTER	269	613	473	1,329	711	478
WYOMING	17	49	26	114	47	31
YATES	9	27	27	56	44	22
NON-NYC TOTAL	3,775	9,310	7,109	19,892	11,283	6,582
BRONX	1,199	1,127	1,614	648	1,004	706
KINGS	1,244	1,113	2,160	826	1,033	700
NEW YORK	839	743	2,180	411	1,104	758
QUEENS	1,054	890	1,146	1,081	1,066	595
RICHMOND	172	229	264	213	284	124
NYC TOTAL	4,508	4,102	7,364	3,179	4,491	2,883
NOT REPORTED	0	0	0	0	0	1
STATEWIDE TOTAL	8,283	13,412	14,473	23,071	15,774	9,466

Source: DCJS Integrated Probation Registrant System (IPRS) File as of 02/2/2020

Provided by: NYS DCJS OJRP 3/25/2020

Appendix F: Probationers Under Supervision on December 31, 2019 by Sex

COUNTY	FEMALE	MALE	Not Reported	Total
ALBANY	582	1,390	0	1,972
ALLEGANY	85	270	0	355
BROOME	441	1,134	0	1,575
CATTARAUGUS	153	406	0	559
CAYUGA	152	363	0	515
CHAUTAUQUA	212	645	0	857
CHEMUNG	242	414	0	656
CHENANGO	95	228	0	323
CLINTON	194	568	0	762
COLUMBIA	91	244	0	335
CORTLAND	139	350	0	489
DELAWARE	69	143	0	212
DUTCHESS	517	1,181	0	1,698
ERIE	679	2,295	0	2,974
ESSEX	66	156	0	222
FRANKLIN	139	318	0	457
FULTON	132	233	0	365
GENESEE	141	307	0	448
GREENE	89	213	0	302
HAMILTON	2	7	0	9
HERKIMER	76	239	0	315
JEFFERSON	216	503	0	719
LEWIS	45	139	0	184
LIVINGSTON	126	257	0	383
MADISON	99	231	0	330
MONROE	1,471	3,915	0	5,386
MONTGOMERY	137	272	1	410
NASSAU	997	4,366	0	5,363
NIAGARA	311	816	0	1,127
ONEIDA	358	834	0	1,192
ONONDAGA	754	2,118	1	2,873
ONTARIO	389	713	0	1,102
ORANGE	524	1,385	1	1,910
ORLEANS	56	114	0	170
OSWEGO	238	559	0	797
OTSEGO	60	137	0	197
PUTNAM	63	321	0	384
RENSSELAER	224	620	0	844
ROCKLAND	205	697	0	902
ST LAWRENCE	139	362	0	501
SARATOGA	247	670	0	917
SCHENECTADY	327	639	0	966
SCHOHARIE	53	144	0	197
SCHUYLER	27	89	0	116
SENECA	80	195	0	275
STEUBEN	197	507	0	704
SUFFOLK	1,605	5,942	82	7,629
SULLIVAN	141	346	0	487
TIOGA	73	165	0	238
TOMPKINS	133	348	0	481
ULSTER	371	807	0	1,178
WARREN	185	403	0	588
WASHINGTON	109	299	0	408
WAYNE	162	395	0	557
WESTCHESTER	730	3,305	4	4,039
WYOMING	87	204	0	291
YATES	63	124	0	187
NON-NYC TOTAL	15,298	44,045	89	59,432
BRONX	1,038	5,794	35	6,867
KINGS	1,081	6,761	159	8,001
NEW YORK	1,181	5,765	174	7,120
QUEENS	963	5,289	34	6,286
RICHMOND	246	1,162	7	1,415
NYC TOTAL	4,509	24,771	409	29,689
NOT REPORTED	12	41	0	53
STATEWIDE TOTAL	19,819	68,857	498	89,174

Source: DCJS Integrated Probation Registrant System (IPRS) File as of 02/2/2020
 Provided by: NYS DCJS OJRP 3/25/2020

Appendix G: Probationers Under Supervision on December 31, 2019 by Race/Ethnicity

COUNTY	WHITE	BLACK	HISPANIC	ASIAN	AM. INDIAN	TOTAL
ALBANY	964	764	175	23	2	1,972
ALLEGANY	328	4	5	2	1	355
BROOME	1,108	321	112	11	2	1,575
CATTARAUGUS	446	28	18	1	62	559
CAYUGA	423	65	17	2	1	515
CHAUTAUQUA	617	96	115	0	11	857
CHEMUNG	499	99	30	2	1	656
CHENANGO	291	16	10	0	0	323
CLINTON	672	38	28	3	5	762
COLUMBIA	265	47	15	1	1	335
CORTLAND	422	45	9	2	1	489
DELAWARE	198	6	7	1	0	212
DUTCHESS	1,062	382	231	7	2	1,698
ERIE	1,446	1,143	259	21	38	2,974
ESSEX	200	5	5	5	2	222
FRANKLIN	349	7	13	0	85	457
FULTON	332	17	10	0	1	365
GENESEE	365	46	22	1	11	448
GREENE	231	23	25	0	0	302
HAMILTON	8	0	0	0	0	9
HERKIMER	290	15	8	1	1	315
JEFFERSON	583	96	27	5	4	719
LEWIS	181	2	1	0	0	184
LIVINGSTON	346	11	20	3	0	383
MADISON	295	14	5	2	3	330
MONROE	2,178	2,341	728	62	14	5,386
MONTGOMERY	268	37	98	3	0	410
NASSAU	2,198	1,323	1,546	147	7	5,363
NIAGARA	729	282	51	2	47	1,127
ONEIDA	831	240	91	19	2	1,192
ONONDAGA	1,570	1,025	191	22	39	2,873
ONTARIO	888	107	92	5	2	1,102
ORANGE	983	429	446	16	3	1,910
ORLEANS	137	17	13	0	1	170
OSWEGO	723	15	41	3	2	797
OTSEGO	179	12	5	0	0	197
PUTNAM	294	21	60	0	1	384
RENSSELAER	584	175	55	8	0	844
ROCKLAND	321	247	294	22	2	902
ST LAWRENCE	450	21	10	1	14	501
SARATOGA	838	45	20	5	1	917
SCHENECTADY	478	317	115	9	1	966
SCHOHARIE	183	6	3	0	2	197
SCHUYLER	109	1	2	0	0	116
SENECA	237	18	15	0	3	275
STEUBEN	633	41	11	3	0	704
SUFFOLK	3,698	1,219	1,919	59	10	7,629
SULLIVAN	306	76	79	2	0	487
TIOGA	227	8	2	0	1	238
TOMPKINS	362	82	23	8	2	481
ULSTER	850	172	142	2	2	1,178
WARREN	519	38	21	1	2	588
WASHINGTON	389	12	7	0	0	408
WAYNE	473	48	25	2	2	557
WESTCHESTER	1,159	1,277	1,456	29	3	4,039
WYOMING	279	7	5	0	0	291
YATES	178	3	5	0	0	187
NON-NYC TOTAL	35,172	12,952	8,738	523	397	59,432
BRONX	666	2,874	2,960	36	3	6,867
KINGS	958	4,370	2,076	131	2	8,001
NEW YORK	1,184	2,820	2,548	174	4	7,120
QUEENS	987	2,427	1,938	492	8	6,286
RICHMOND	548	490	291	32	5	1,415
NYC TOTAL	4,343	12,981	9,813	865	22	29,689
NOT REPORTED	39	10	3	0	0	53
STATEWIDE TOTAL	39,554	25,943	18,554	1,388	419	89,174

Source: DCJS Integrated Probation Registrant System (IPRS) File as of 02/2/2020
 Provided by: NYS DCJS OJRP 3/25/2020

Appendix H: Probationers Discharged from Supervision in 2019 by Discharge Type

COUNTY	MAXIMUM EXPIRATION	EARLY DISCHARGE	REVOKED TECHNICAL VIOLATION	REVOKED NEW CONVICTION	EARLY DISCHARGE DUE TO NEW CONVICTION	REFERRED FOR FURTHER COURT ACTION	DEATH	OTHER	TOTAL
ALBANY	322	95	160	42	14	113	7	40	793
ALLEGANY	43	52	22	13	6	7	5	5	153
BROOME	186	144	185	59	33	91	8	39	745
CATTARAUGUS	78	64	77	50	2	12	2	20	305
CAYUGA	108	79	62	22	3	6	1	11	292
CHAUTAUQUA	126	158	283	1	2	232	15	7	824
CHEMUNG	123	29	113	2	0	14	5	6	292
CHENANGO	50	15	29	11	1	32	4	11	153
CLINTON	122	23	74	17	0	22	6	16	280
COLUMBIA	48	11	13	3	1	3	2	3	84
CORTLAND	97	43	31	28	9	5	4	1	218
DELAWARE	34	30	23	3	0	1	1	2	94
DUTCHESS	242	135	165	41	5	202	17	12	819
ERIE	313	446	299	79	1	138	35	36	1,347
ESSEX	65	14	17	5	0	0	1	4	106
FRANKLIN	54	28	90	1	1	0	4	10	188
FULTON	57	50	36	30	0	1	1	6	181
GENESEE	48	39	62	21	0	25	7	2	204
GREENE	52	18	24	2	2	21	4	5	128
HAMILTON	1	1	0	0	0	0	0	0	2
HERKIMER	65	13	30	11	1	2	2	2	126
JEFFERSON	68	175	128	7	1	10	7	22	418
LEWIS	26	22	11	6	0	6	3	1	75
LIVINGSTON	63	30	33	19	0	4	2	7	158
MADISON	28	30	58	5	1	35	3	5	165
MONROE	796	518	484	167	13	116	29	29	2,152
MONTGOMERY	50	47	26	28	2	2	2	1	158
NASSAU	900	305	273	27	4	49	31	46	1,635
NIAGARA	159	111	81	30	6	169	9	15	580
ONEIDA	177	229	161	4	6	1	15	21	614
ONONDAGA	182	541	390	74	3	46	19	39	1,294
ONTARIO	90	117	59	30	1	47	9	18	371
ORANGE	288	297	125	53	3	138	15	49	968
ORLEANS	30	18	22	0	1	1	1	3	76
OSWEGO	83	131	124	4	1	17	7	14	381
OTSEGO	23	2	8	1	0	0	0	1	35
PUTNAM	83	12	30	1	0	25	1	7	159
RENSSELAER	118	42	103	8	1	31	5	22	330
ROCKLAND	152	109	40	18	0	7	16	61	403
ST LAWRENCE	92	15	68	1	1	0	2	6	185
SARATOGA	150	96	85	70	0	9	8	12	430
SCHENECTADY	159	82	96	23	1	41	6	13	421
SCHOHARIE	26	16	29	0	0	13	2	1	87
SCHUYLER	11	29	12	0	0	1	0	4	57
SENECA	37	32	33	8	0	1	0	2	113
STEUBEN	81	68	139	16	1	40	5	18	368
SUFFOLK	1,099	283	426	183	6	1,175	77	119	3,368
SULLIVAN	58	61	73	8	1	28	2	7	238
TIOGA	62	18	37	1	0	12	3	6	139
TOMPKINS	103	44	54	5	0	37	9	35	287
ULSTER	154	93	123	42	7	90	18	74	601
WARREN	54	68	81	23	3	8	4	2	243
WASHINGTON	75	21	78	2	0	0	1	6	183
WAYNE	118	14	46	9	0	13	2	5	207
WESTCHESTER	596	372	373	131	11	66	36	70	1,655
WYOMING	30	35	30	1	0	47	3	4	150
YATES	25	24	15	9	0	15	1	0	89
NON-NYC TOTAL	8,480	5,594	5,749	1,455	155	3,227	484	983	26,127
BRONX	1,291	155	159	93	0	9	24	210	1,941
KINGS	987	388	109	129	2	11	10	273	1,909
NEW YORK	774	198	153	132	1	23	9	143	1,433
QUEENS	1,086	211	98	98	1	80	14	125	1,713
RICHMOND	276	69	32	44	0	3	1	50	475
NYC TOTAL	4,414	1,021	551	496	4	126	58	801	7,471
NOT REPORTED	2	0	0	0	0	0	0	1	3
STATEWIDE TOTAL	12,896	6,615	6,300	1,951	159	3,353	542	1,785	33,601

Source: DCJS Integrated Probation Registrant System (IPRS) File as of 02/2/2020

Provided by: NYS DCJS OJRP 3/25/2020